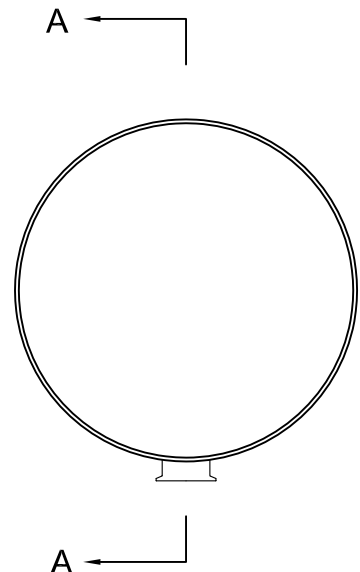
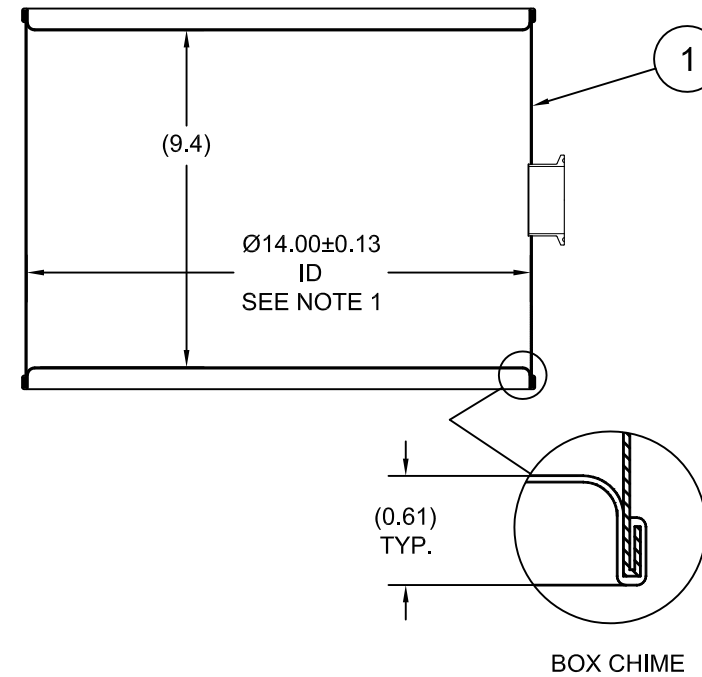


ECN #	REV	DESCRIPTION	DATE
OE-005	A1	REDRAWN TO AutoCAD	21-JUN-2013



SECTION A-A  
(SHOWN W/ PLUG REMOVED)



**NOTES:**

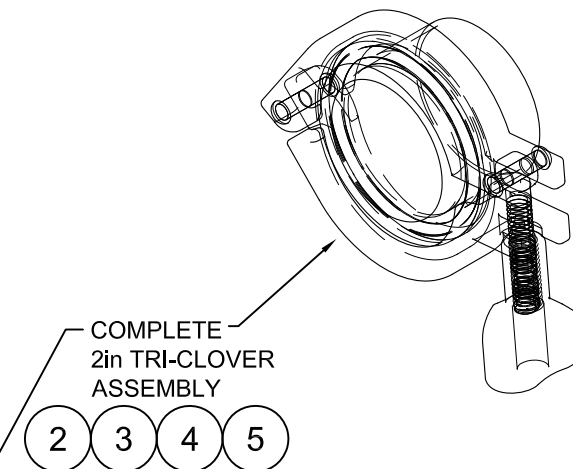
1. TO DETERMINE GREATER ACCURACY OF ANY DIAMETRIC DIMENSION, MEASURING OF CIRCUMFERENCE IS REQUIRED

**MATERIAL:**

- 304SS PER ASTM A240 OR EQUIVALENT
- MATERIAL THICKNESS: 0.9mm (0.0319 - 0.0370; 20 GAUGE)

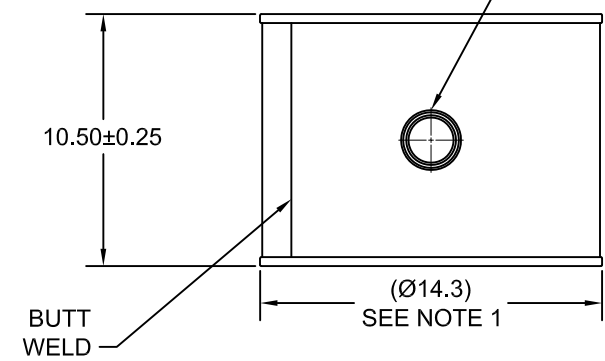
**FINISH:**

- PASSIVATED INNER AND OUTER SURFACE OF ALL WELD SEAMS
- FULL ALCOHOL RINSE PRIOR TO SEAMING



COMPLETE  
2in TRI-CLOVER  
ASSEMBLY

- 2
- 3
- 4
- 5



BUTT  
WELD

ITEM	P/N	DESCRIPTION	QTY
5	FT10037	2in TRI CLOVER BUNA GASKET	1
4	FT10036	2in SOLID END CAP 304SS	1
3	FT10034	2in TRI CLOVER HEAVY DUTY TRI-CLAMP 304SS	1
2	FT10033	2in TRI-CLOVER WELDING FERRULE 304SS	1
1		5 GALLON TIGHT HEAD DRUM	1

TARE WEIGHT:  
10 lbs

THE USE OF INFORMATION CONTAINED HEREIN IS RESTRICTED FOR THE BENEFIT OF SKOLNIK INDUSTRIES ONLY. UNAUTHORIZED USE OR DISCLOSURE, COPYING OR OTHERWISE REPRODUCING (IN ANY MANNER) ANY PORTION OF THIS DRAWING WITHOUT PRIOR WRITTEN PERMISSION OF AN AUTHORIZED OFFICIAL OF SKOLNIK INDUSTRIES IS STRICTLY PROHIBITED.

MFG BR	DRW LJT	CHK JG
SLS DR	QA MD	
APR G. Petersen		
FILE CREATED IN AutoCAD 2002	3 <sup>RD</sup>	

**UNLESS STATED OTHERWISE**  
(DIMENSIONS IN PARENTHESIS ARE FOR REFERENCE ONLY!!!)  
ALL DIMENSIONS ARE IN INCHES  
DO NOT SCALE DRAWING  
TOLERANCES:  
FRACTIONS ±1/4  
X° ± 3°  
X.X ± 0.2  
X.XX ± 0.10  
X.XXX ± 0.030

**SKOLNIK INDUSTRIES, INC.**  
4900 SOUTH KILBOURN AVENUE, CHICAGO, IL 60632

DESCRIPTION  
5 GALLON TIGHT HEAD DRUM  
0.9 - 0.9 - 0.9 304SS  
NON UN

REL. DATE	PART NUM. / FILENAME	REV
-	SW0503B	A1