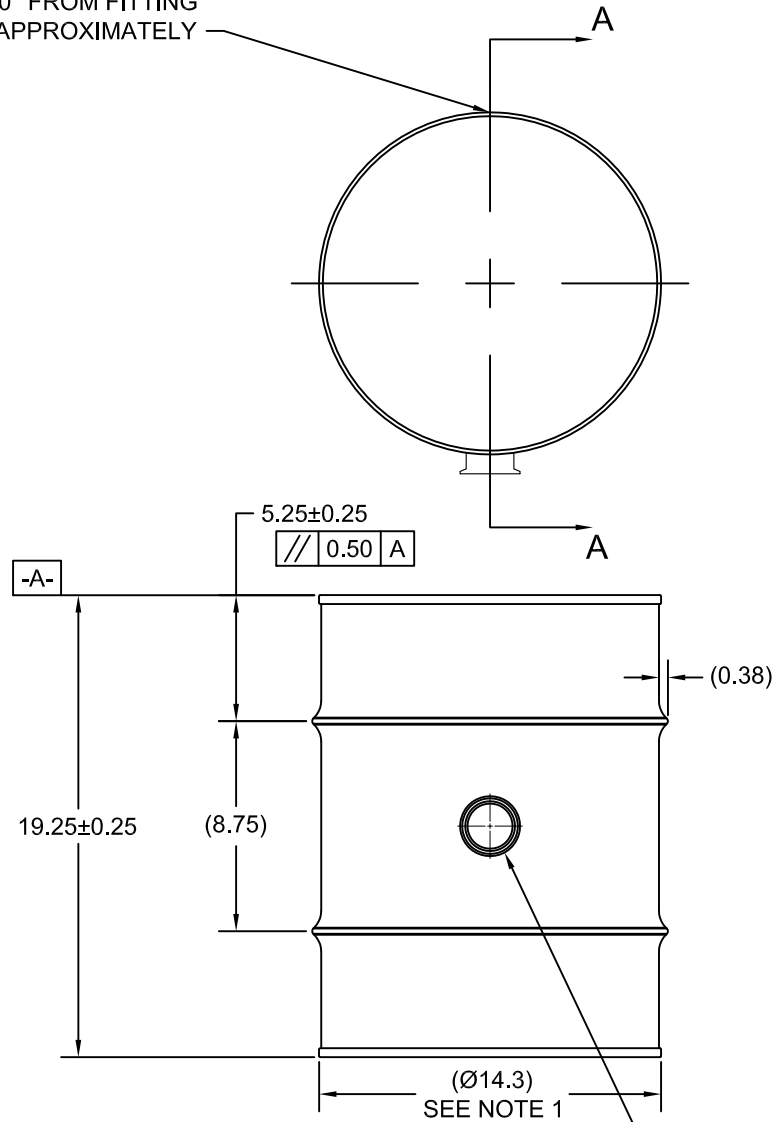
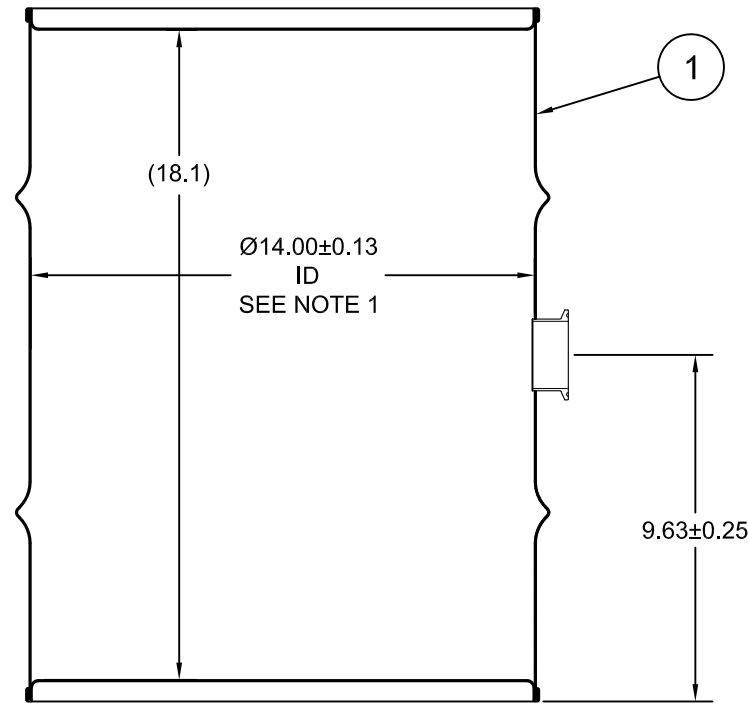


ECN # or INIT	REV	DESCRIPTION	DATE
OE-005	A1	REDRAWN TO AutoCAD	8-FEB-2013

BUTT WELD
@ 180° FROM FITTING
APPROXIMATELY



SECTION A-A
SHOWN W/ PLUG REMOVED



NOTES:

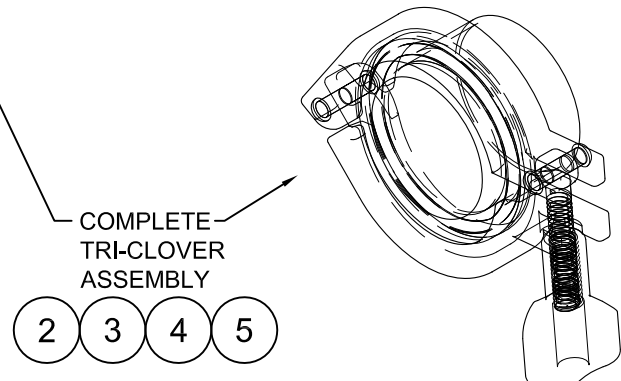
1. TO DETERMINE GREATER ACCURACY OF ANY DIAMETRIC DIMENSION, MEASURING OF CIRCUMFERENCE IS REQUIRED

MATERIAL:

1. 304SS PER ASTM A240 OR EQUIVALENT
2. MATERIAL THICKNESS: 0.9mm (0.0319 - 0.0370, 20 GAUGE)

FINISH:

1. PASSIVATED INNER AND OUTER SURFACE OF WELDS
2. FULL ALCOHOL RINSE PRIOR TO SEAMING



COMPLETE
TRI-CLOVER
ASSEMBLY

- 2
- 3
- 4
- 5

TARE WEIGHT:
14 lbs

ITEM	P/N	DESCRIPTION	QTY
5	FT10037	TRI CLOVER 2in BUNA GASKET	1
4	FT10036	TRI-CLOVER 304SS 2in SOLID END CAP	1
3	FT10034	TRI CLOVER 304SS 2in HD CLAMP	1
2	FT10033	TRI-CLOVER 304SS WELDING FERRULE	1
1		10 GALLON TIGHT HEAD DRUM	1

MFG BR	DRW LJT	CHK JG	UNLESS STATED OTHERWISE <i>(DIMENSIONS IN PARENTHESIS ARE FOR REFERENCE ONLY!!!)</i> ALL DIMENSIONS ARE IN INCHES DO NOT SCALE DRAWING TOLERANCES: FRACTIONS ±1/4	SKOLNIK INDUSTRIES, INC. 4900 SOUTH KILBOURN AVENUE, CHICAGO, IL 60632
	SLS DR	QA MD		
APR G. Petersen			X° ± 3° X.X ± 0.2 X.XX ± 0.10 X.XXX ± 0.030	DESCRIPTION 10 GALLON TIGHT HEAD DRUM 0.9 - 0.9 - 0.9 304SS NON UN
FILE CREATED IN AutoCAD 2002			3 RD	REL. DATE -
THE USE OF INFORMATION CONTAINED HEREIN IS RESTRICTED FOR THE BENEFIT OF SKOLNIK INDUSTRIES ONLY. UNAUTHORIZED USE OR DISCLOSURE, COPYING OR OTHERWISE REPRODUCING (IN ANY MANNER) ANY PORTION OF THIS DRAWING WITHOUT PRIOR WRITTEN PERMISSION OF AN AUTHORIZED OFFICIAL OF SKOLNIK INDUSTRIES IS STRICTLY PROHIBITED.				PART NUM. / FILENAME SW1003B
				REV A1