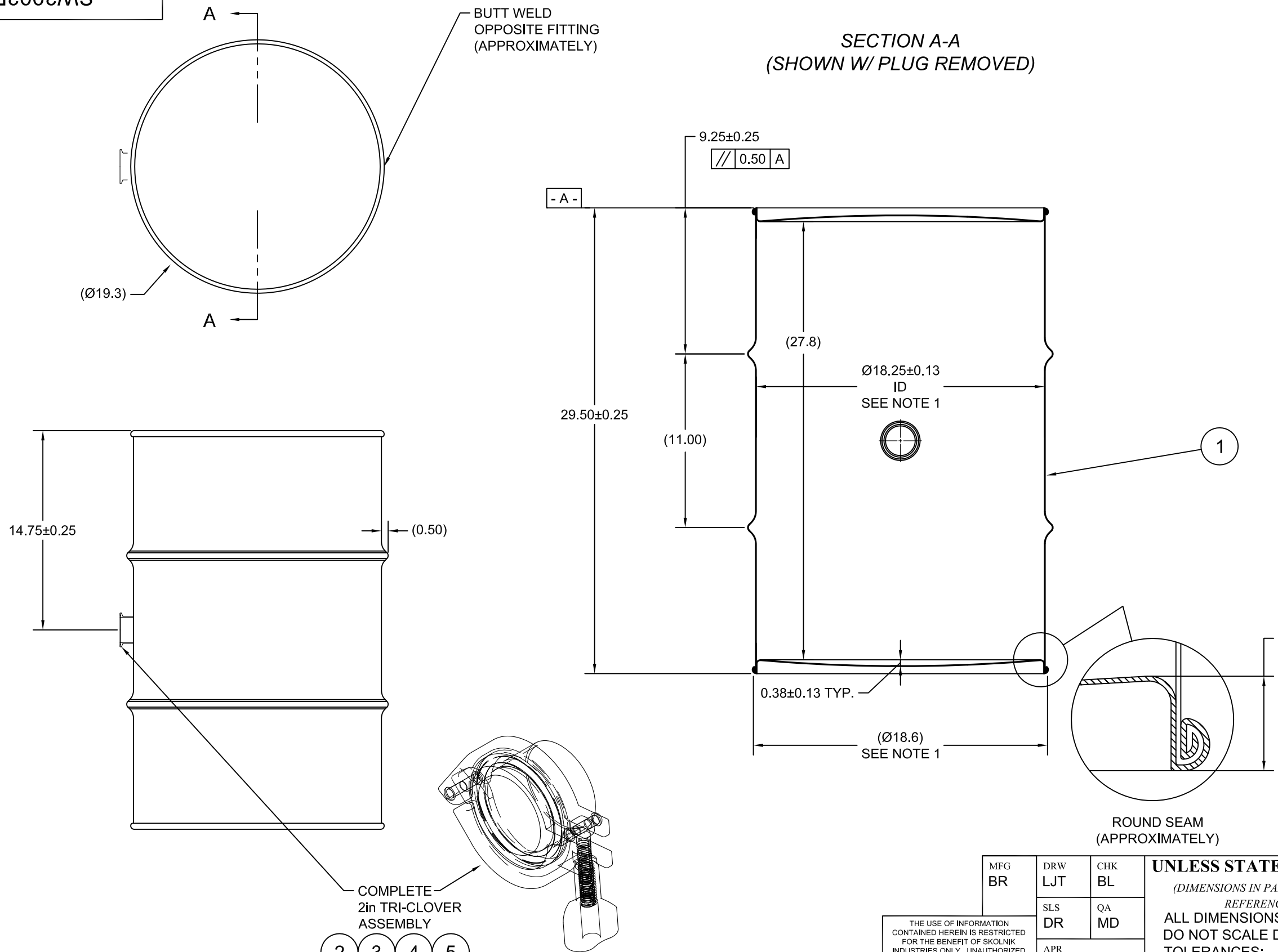


SW3003B

ECN #	REV	DESCRIPTION	DATE
	A	RELEASED	01-OCT-2010
LJT	A1	ADD'D TARE WEIGHT	01-OCT-2010
LJT	A2	ADD'D DIMENSION	26-JUL-2011
OE-001	A3	ADDED CHIME VIEW	30-MAY-2013

SECTION A-A
(SHOWN W/ PLUG REMOVED)



NOTES:

1. TO DETERMINE GREATER ACCURACY OF ANY DIAMETRIC DIMENSION, MEASURING OF CIRCUMFERENCE IS REQUIRED

MATERIAL:

- 1. 304SS PER ASTM A240 OR EQUIVALENT
- 2. MATERIAL THICKNESS: 1.2mm (0.0433 - 0.0480; 18 GAUGE)

FINISH:

- 1. PASSIVATED INNER AND OUTER SURFACE OF BODY WELD SEAM
- 2. FULL ALCOHOL RINSE PRIOR TO SEAMING

5	FT10037	2in TRI CLOVER BUNA GASKET	1
4	FT10036	2in SOLID END CAP 304SS	1
3	FT10034	2in TRI CLOVER HEAVY DUTY TRI-CLAMP 304SS	1
2	FT10033	2in TRI-CLOVER WELDING FERRULE 304SS	1
1		30 GALLON TIGHT HEAD DRUM	1
ITEM	P/N	DESCRIPTION	QTY

MFG BR	DRW LJT	CHK BL	UNLESS STATED OTHERWISE (DIMENSIONS IN PARENTHESIS ARE FOR REFERENCE ONLY!!!) ALL DIMENSIONS ARE IN INCHES DO NOT SCALE DRAWING TOLERANCES: FRACTIONS ±1/4 X° ± 3° X.X ± 0.2 X.XX ± 0.10 X.XXX ± 0.030
SLS DR	QA MD	APR G. Petersen	
FILE CREATED IN AutoCAD 2002		3 RD	

SKOLNIK INDUSTRIES, INC. 4900 SOUTH KILBOURN AVENUE, CHICAGO, IL 60632		
DESCRIPTION 30 GALLON TIGHT HEAD WINE DRUM 1.2 - 1.2 - 1.2 304SS STEEL NON UN		
REL. DATE 01-OCT-2010	PART NUM. / FILENAME SW3003B	REV A3

TARE WEIGHT:
33 lbs

THE USE OF INFORMATION CONTAINED HEREIN IS RESTRICTED FOR THE BENEFIT OF SKOLNIK INDUSTRIES ONLY. UNAUTHORIZED USE OR DISCLOSURE, COPYING OR OTHERWISE REPRODUCING (IN ANY MANNER) ANY PORTION OF THIS DRAWING WITHOUT PRIOR WRITTEN PERMISSION OF AN AUTHORIZED OFFICIAL OF SKOLNIK INDUSTRIES IS STRICTLY PROHIBITED.