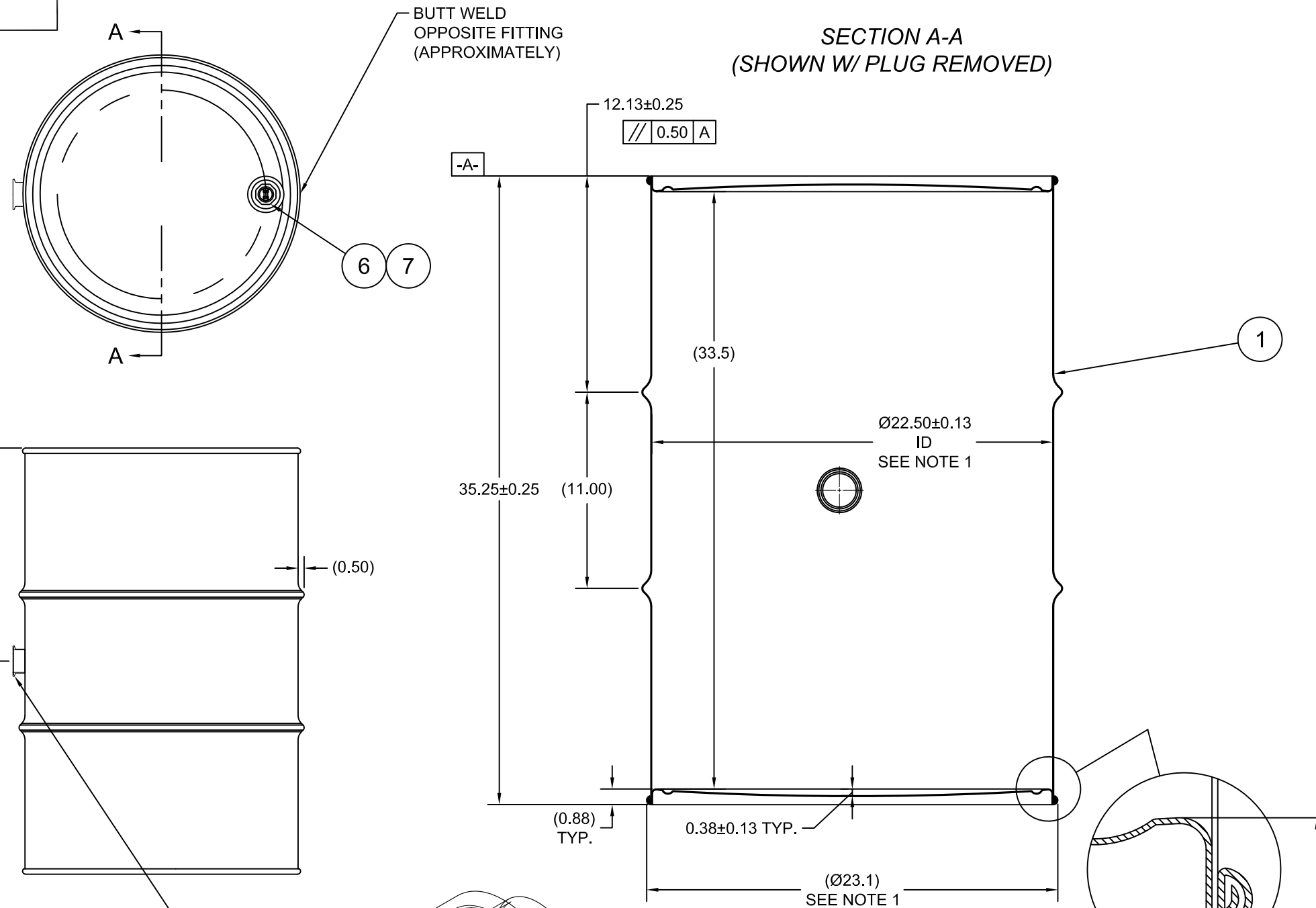


SW5503A

ECN # or INIT	REV	DESCRIPTION	DATE
OE-005	A1	REDRAWN TO AutoCAD	21-JUN-2013

**SECTION A-A
(SHOWN W/ PLUG REMOVED)**



NOTES:

1. TO DETERMINE GREATER ACCURACY OF ANY DIAMETRIC DIMENSION, MEASURING OF CIRCUMFERENCE IS REQUIRED

MATERIAL:

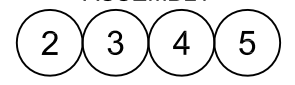
- 1. 304SS PER ASTM A240 OR EQUIVALENT
- 2. MATERIAL THICKNESS: 1.2mm (0.0433 - 0.0480; 18 GAUGE)

FINISH:

- 1. PASSIVATED INNER AND OUTER SURFACE OF BODY WELD SEAM
- 2. FULL ALCOHOL RINSE PRIOR TO SEAMING

ITEM	P/N	DESCRIPTION	QTY
7	PT3050	PLUG 3/4 TS 316SS BUNA GASKET	1
6	FT3050	FLANGE 3/4 TS 316SS BUNA GASKET	1
5	FT10037	2in TRI CLOVER BUNA GASKET	1
4	FT10036	2in SOLID END CAP 304SS	1
3	FT10034	2in TRI CLOVER HEAVY DUTY TRI-CLAMP 304SS	1
2	FT10033	2in TRI-CLOVER WELDING FERRULE 304SS	1
1		55 GALLON TIGHT HEAD DRUM	1

COMPLETE 2in TRI-CLOVER ASSEMBLY



TARE WEIGHT:
48 lbs

THE USE OF INFORMATION CONTAINED HEREIN IS RESTRICTED FOR THE BENEFIT OF SKOLNIK INDUSTRIES ONLY. UNAUTHORIZED USE OR DISCLOSURE, COPYING OR OTHERWISE REPRODUCING (IN ANY MANNER) ANY PORTION OF THIS DRAWING WITHOUT PRIOR WRITTEN PERMISSION OF AN AUTHORIZED OFFICIAL OF SKOLNIK INDUSTRIES IS STRICTLY PROHIBITED.

MFG BR	DRW LJT	CHK JG	UNLESS STATED OTHERWISE (DIMENSIONS IN PARENTHESIS ARE FOR REFERENCE ONLY!!!) ALL DIMENSIONS ARE IN INCHES DO NOT SCALE DRAWING TOLERANCES: FRACTIONS ±1/4
SLS DR	QA MD	X° ± 3° X.X ± 0.2	
APR G. Petersen	FILE CREATED IN AutoCAD 2002	X.XX ± 0.10 X.XXX ± 0.030	

SKOLNIK INDUSTRIES, INC. 4900 SOUTH KILBOURN AVENUE, CHICAGO, IL 60632		
DESCRIPTION 55 GALLON TIGHT HEAD WINE DRUM 1.2 - 1.2 - 1.2 304SS STEEL NON UN		
REL. DATE -	PART NUM. / FILENAME SW5503A	REV A1