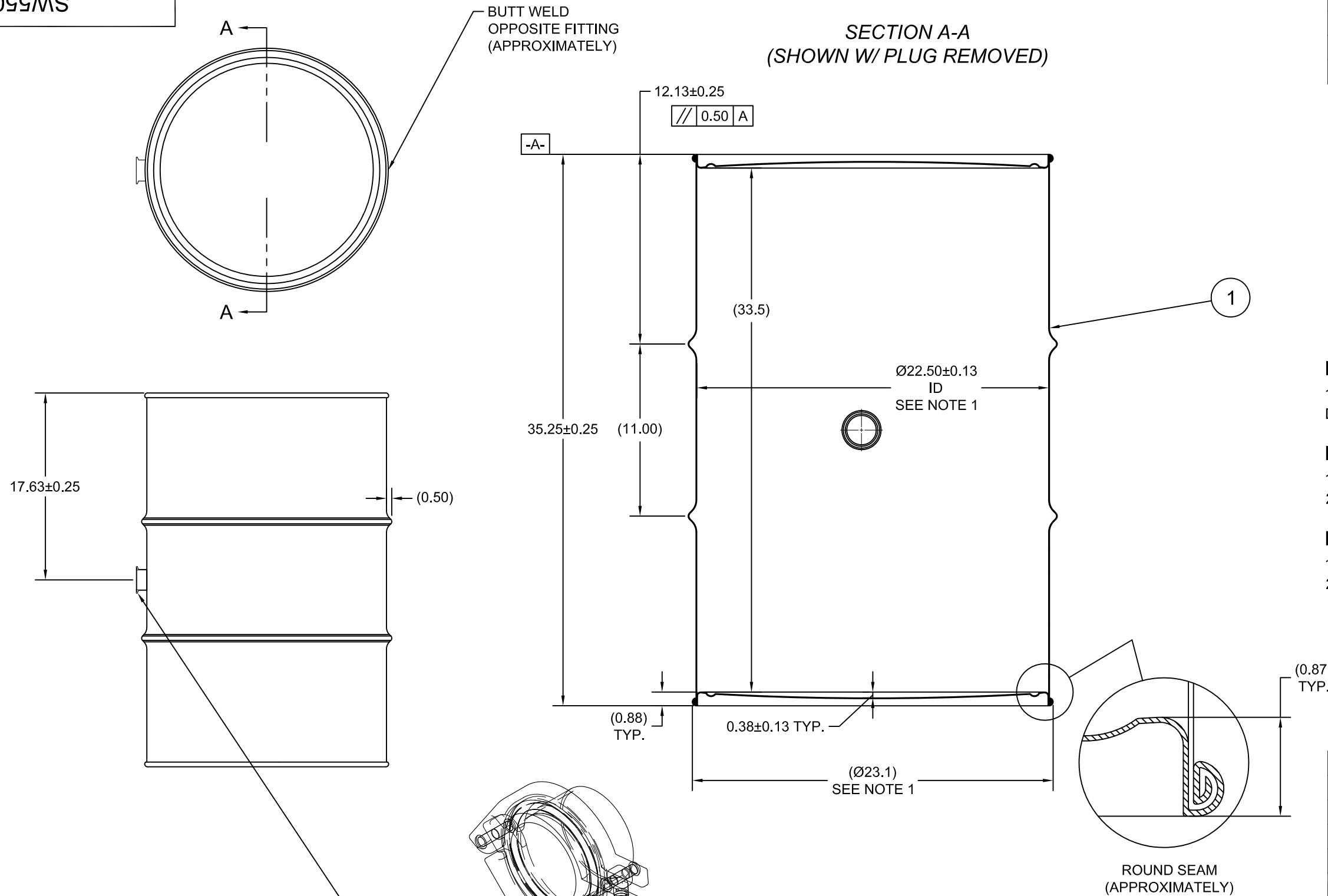


SW5503B

ECN # or INIT	REV	DESCRIPTION	DATE
	A	RELEASED	01-OCT-2010
OE-001	A1	CLERICAL ERROR	11-JAN-2011
OE-001	A2	ADDED CHIME VIEW	30-MAY-2013

SECTION A-A
(SHOWN W/ PLUG REMOVED)



NOTES:

1. TO DETERMINE GREATER ACCURACY OF ANY DIAMETRIC DIMENSION, MEASURING OF CIRCUMFERENCE IS REQUIRED

MATERIAL:

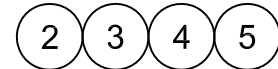
- 304SS PER ASTM A240 OR EQUIVALENT
- MATERIAL THICKNESS: 1.2mm (0.0433 - 0.0480; 18 GAUGE)

FINISH:

- PASSIVATED INNER AND OUTER SURFACE OF BODY WELD SEAM
- FULL ALCOHOL RINSE PRIOR TO SEAMING

5	FT10037	2in TRI CLOVER BUNA GASKET	1
4	FT10036	2in SOLID END CAP 304SS	1
3	FT10034	2in TRI CLOVER HEAVY DUTY TRI-CLAMP 304SS	1
2	FT10033	2in TRI-CLOVER WELDING FERRULE 304SS	1
1		55 GALLON TIGHT HEAD DRUM	1
ITEM	P/N	DESCRIPTION	QTY

COMPLETE
2in TRI-CLOVER
ASSEMBLY



TARE WEIGHT:
48 lbs

THE USE OF INFORMATION CONTAINED HEREIN IS RESTRICTED FOR THE BENEFIT OF SKOLNIK INDUSTRIES ONLY. UNAUTHORIZED USE OR DISCLOSURE, COPYING OR OTHERWISE REPRODUCING (IN ANY MANNER) ANY PORTION OF THIS DRAWING WITHOUT PRIOR WRITTEN PERMISSION OF AN AUTHORIZED OFFICIAL OF SKOLNIK INDUSTRIES IS STRICTLY PROHIBITED.

MFG BR	DRW LJT	CHK BL
SLS DR	QA MD	
APR G. Petersen		
FILE CREATED IN AutoCAD 2002	3 RD	

UNLESS STATED OTHERWISE

(DIMENSIONS IN PARENTHESIS ARE FOR REFERENCE ONLY!!!)

ALL DIMENSIONS ARE IN INCHES
DO NOT SCALE DRAWING

TOLERANCES:

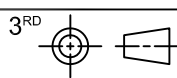
FRACTIONS ±1/4

X° ± 3°

X.X ± 0.2

X.XX ± 0.10

X.XXX ± 0.030



SKOLNIK INDUSTRIES, INC.
4900 SOUTH KILBOURN AVENUE, CHICAGO, IL 60632

DESCRIPTION
55 GALLON TIGHT HEAD WINE DRUM
1.2 - 1.2 - 1.2 304SS STEEL
NON UN

REL. DATE
01-OCT-2010

PART NUM. / FILENAME
SW5503B

REV
A2