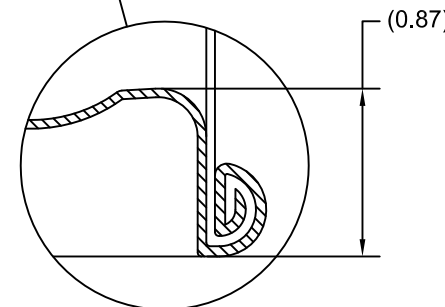
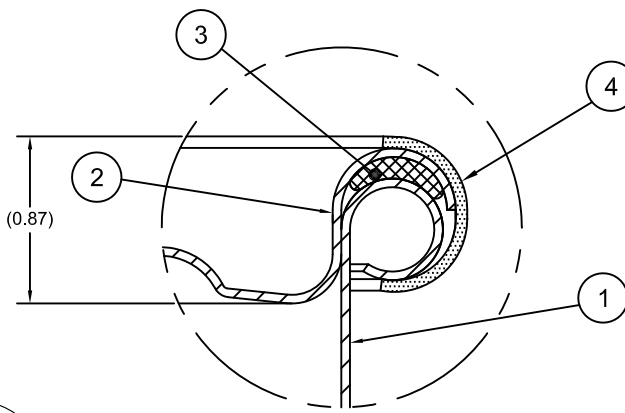
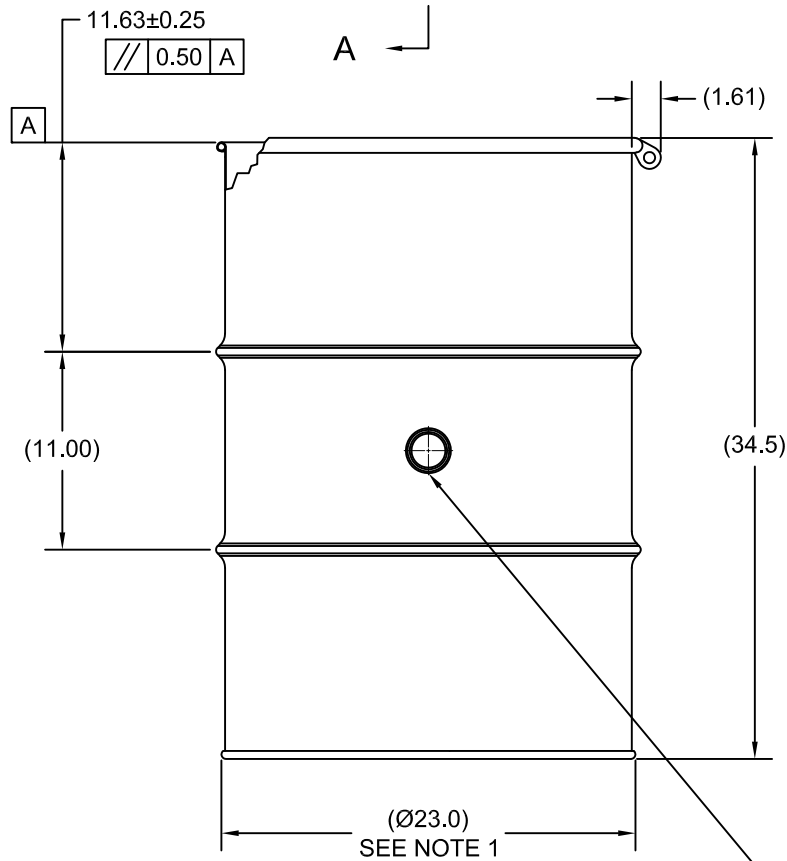
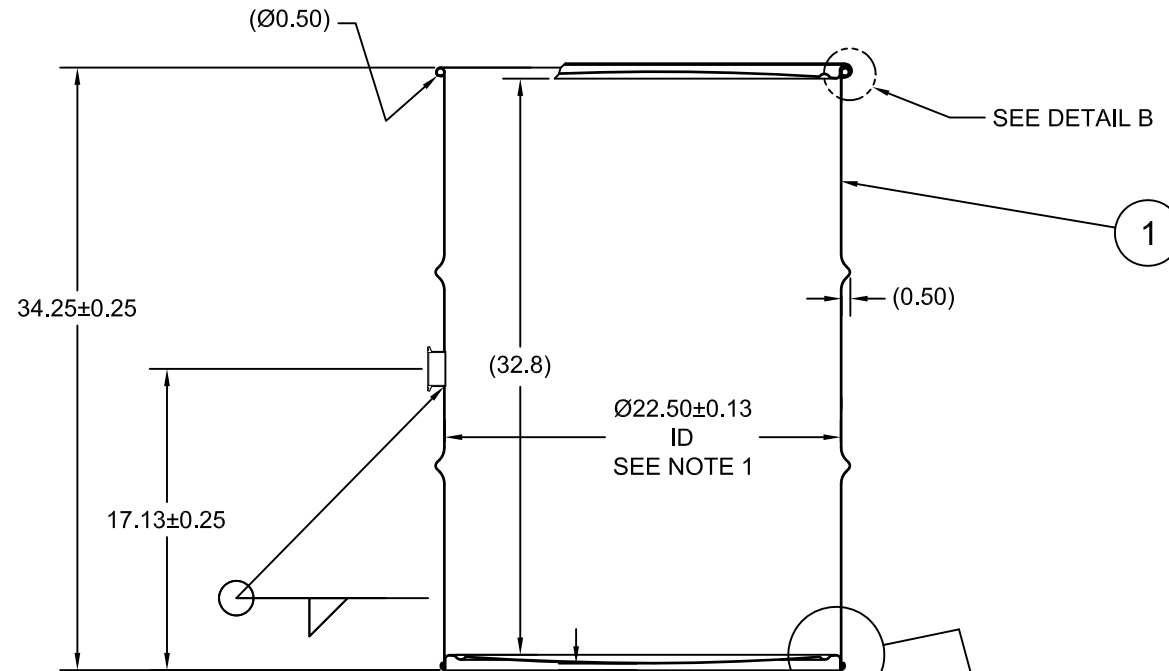
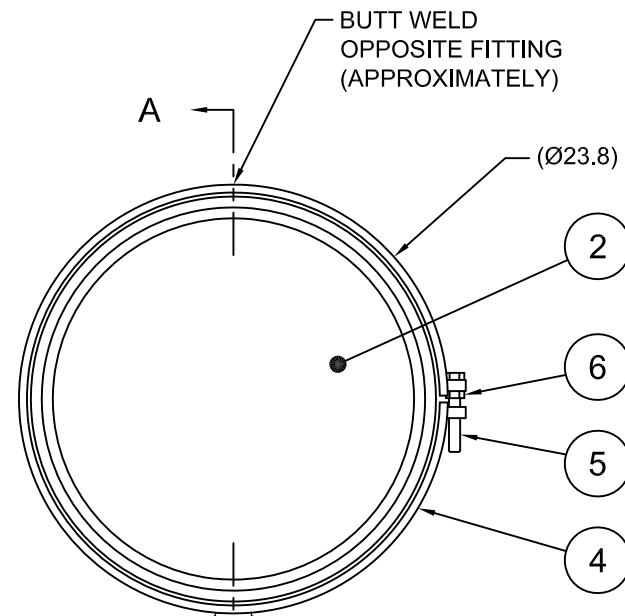


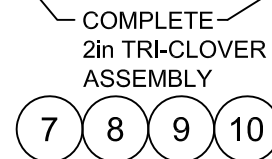
| ECN # or INIT | REV | DESCRIPTION | DATE |
|---------------|-----|--------------------|-------------|
| OE-005 | A1 | REDRAWN TO AutoCAD | 28-OCT-2014 |

SECTION A-A



DETAIL B

ROUND SEAM (APPROXIMATELY)



TARE WEIGHT:
48 lbs

NOTES:

1. TO DETERMINE GREATER ACCURACY OF ANY DIAMETRIC DIMENSION, MEASURING OF CIRCUMFERENCE IS REQUIRED

MATERIAL:

1. 304SS PER ASTM A240 OR EQUIVALENT
2. MATERIAL THICKNESS: 1.2mm (0.0433 - 0.0480; 18 GAUGE)
3. GASKET MAT'L PER ASTM D1056
4. CARBON STEEL BOLT RING

FINISH:

1. PASSIVATED INNER AND OUTER SURFACE OF ALL WELDS
2. FULL ALCOHOL RINSE PRIOR TO SEAMING

| ITEM | P/N | DESCRIPTION | QTY |
|------|---------|---|-----|
| 10 | FT10037 | 2in TRI CLOVER BUNA GASKET | 1 |
| 9 | FT10036 | 2in SOLID END CAP 304SS | 1 |
| 8 | FT10034 | 2in TRI CLOVER HEAVY DUTY TRI-CLAMP 304SS | 1 |
| 7 | FT10033 | 2in TRI-CLOVER WELDING FERRULE 304SS | 1 |
| 6 | NT5800 | 5/8-11UNC HEX JAM NUT | 1 |
| 5 | BT5840 | 5/8-11UNC X 4in LONG HEX HEAD BOLT | 1 |
| 4 | RB5512 | BOLT RING 55G 12GA 5/8 LUG | 1 |
| 3 | GE5502 | GASKET Ø1/2 EPDM WHITE | 1 |
| 2 | P2212S | COVER Ø22.50 ID | 1 |
| 1 | | BODY/BOTTOM 55 GALLON DRUM Ø22.50 ID | 1 |

| | | | |
|---------------------------------|-----------------|-----------------|--|
| MFG BR | DRW LJT | CHK JG | <p>UNLESS STATED OTHERWISE</p> <p>(DIMENSIONS IN PARENTHESIS ARE FOR REFERENCE ONLY!!!)</p> <p>ALL DIMENSIONS ARE IN INCHES DO NOT SCALE DRAWING</p> <p>TOLERANCES: FRACTIONS ±1/4</p> <p>X° ± 3° X.X ± 0.2 X.XX ± 0.10 X.XXX ± 0.030</p> |
| SLS DR | QA SB | APR HZS / BH | |
| FILE CREATED IN AutoCAD 2002 | 3 RD | | |

| | | |
|--|---------------------------------|-----------|
| <p>SKOLNIK INDUSTRIES, INC. 4900 SOUTH KILBOURN AVENUE, CHICAGO, IL 60632</p> | | |
| <p>DESCRIPTION 55 GALLON OPEN HEAD DRUM 1.2 - 1.2 - 1.2 304SS NON UN</p> | | |
| REL. DATE - | PART NUM. / FILENAME SW5507B | REV A1 |

THE USE OF INFORMATION CONTAINED HEREIN IS RESTRICTED FOR THE BENEFIT OF SKOLNIK INDUSTRIES ONLY. UNAUTHORIZED USE OR DISCLOSURE, COPYING OR OTHERWISE REPRODUCING (IN ANY MANNER) ANY PORTION OF THIS DRAWING WITHOUT PRIOR WRITTEN PERMISSION OF AN AUTHORIZED OFFICIAL OF SKOLNIK INDUSTRIES IS STRICTLY PROHIBITED.