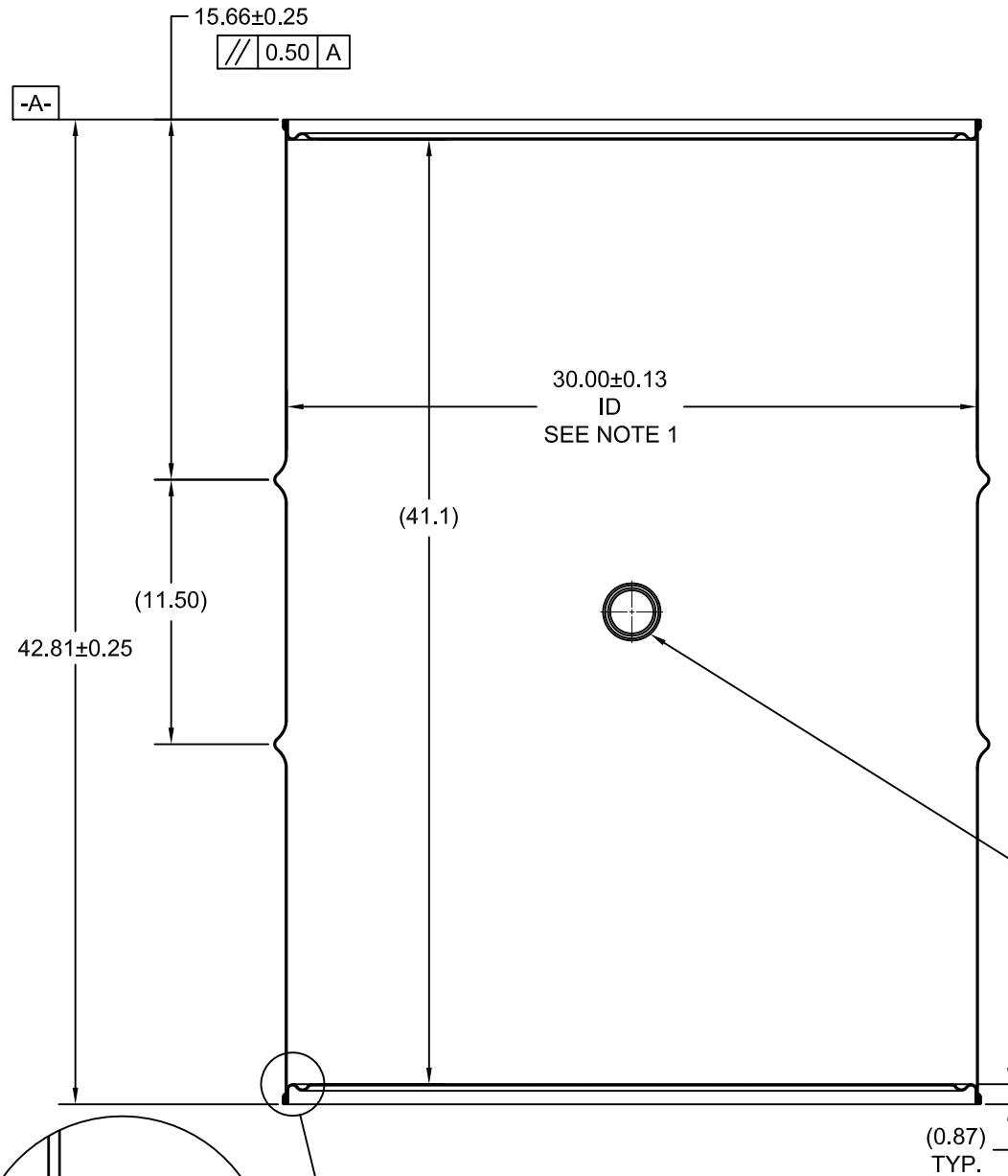
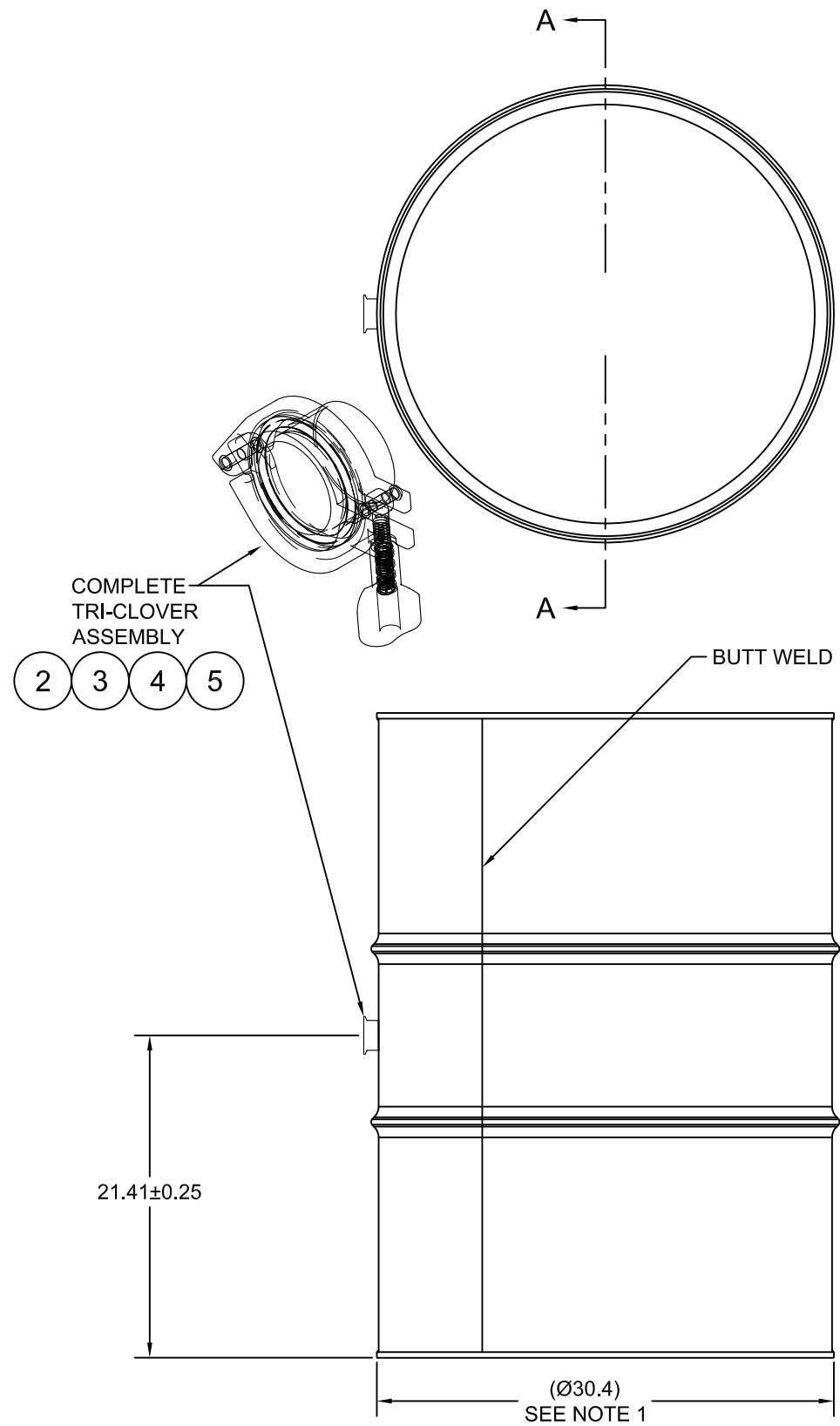


ECN # or INIT	REV	DESCRIPTION	DATE
	A	RELEASE	20-JUN-2014

SECTION A-A
(FITTING SHOWN WITH PARTS REMOVED)



NOTES:

1. TO DETERMINE GREATER ACCURACY OF ANY DIAMETRIC DIMENSION, MEASURING OF CIRCUMFERENCE IS REQUIRED

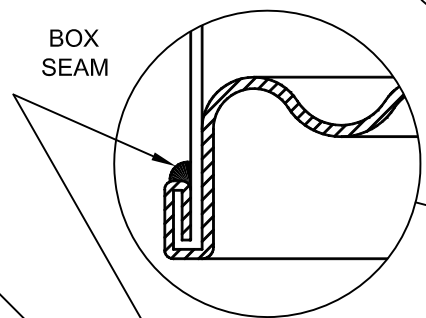
MATERIAL:

1. 304SS PER ASTM A240 OR EQUIVALENT
2. MATERIAL THICKNESS: DRUM 1.5mm (0.0543 - 0.0590, 16 GAUGE)

FINISH:

1. PASSIVATED INNER AND OUTER SURFACE OF WELDS
2. FULL ALCOHOL RINSE PRIOR TO SEAMING

ITEM	P/N	DESCRIPTION	QTY
5	FT10037	2in TRI CLOVER BUNA GASKET	1
4	FT10036	2in SOLID END CAP 304SS	1
3	FT10034	2in TRI CLOVER HEAVY DUTY TRI-CLAMP 304SS	1
2	FT10033	2in TRI-CLOVER WELDING FERRULE 304SS	1
1		124 GALLON TIGHT HEAD DRUM	1



GMAW
TOP & BOTTOM

TARE WEIGHT:
105 lbs

THE USE OF INFORMATION CONTAINED HEREIN IS RESTRICTED FOR THE BENEFIT OF SKOLNIK INDUSTRIES ONLY. UNAUTHORIZED USE OR DISCLOSURE, COPYING OR OTHERWISE REPRODUCING (IN ANY MANNER) ANY PORTION OF THIS DRAWING WITHOUT PRIOR WRITTEN PERMISSION OF AN AUTHORIZED OFFICIAL OF SKOLNIK INDUSTRIES IS STRICTLY PROHIBITED.

MFG JR	DRW LJT	CHK SS
SLS DR	QA SB	
MG HVS / BH		
FILE CREATED IN AutoCAD 2002	3 RD	

UNLESS STATED OTHERWISE

(DIMENSIONS IN PARENTHESIS ARE FOR REFERENCE ONLY!!!)

ALL DIMENSIONS ARE IN INCHES
DO NOT SCALE DRAWING

TOLERANCES:
FRACTIONS ±1/4
X° ± 3°
X.X ± 0.2
X.XX ± 0.10
X.XXX ± 0.030

SKOLNIK INDUSTRIES, INC.
4900 SOUTH KILBOURN AVENUE, CHICAGO, IL 60632

DESCRIPTION
124 GALLON TIGHT HEAD WINE DRUM - WELDED CHIMES
1.5 - 1.5 - 1.5 304 STAINLESS STEEL
NON UN

REL. DATE 20-JUN-2014	PART NUM. / FILENAME SWC12401B	REV A
--------------------------	-----------------------------------	----------